






Planning for the success of our school facilities...and our future!

 Peshtigo School District
341 N. Emery Avenue
Peshtigo, WI 54157

Responding to Community Input

Since fall 2019, the Peshtigo School District Board of Education, administration, staff, families, and community members have participated in several community events that have helped shape the educational priorities of the District.

A priority is placed on educational programming and facilities that provide:

-  Modern learning facilities, adequate for today's current curriculum
-  Diverse learning needs, especially for courses such as technical education, life skills, and business education
-  Community access, performance areas, green space, and gym space
-  Long-term Flexibility


Facility Study Identified Critical Needs

In summer 2020, a facility study confirmed extensive repairs are needed at the Middle/High School, including heating and cooling, electrical, plumbing, safety and security, and updates to interior finishes and equipment.

A Long-Term Comprehensive Solution

The plan proposed through the referendum includes an addition and renovation that addresses community feedback, provides needed space for educational programming, and completes extensive repairs to the Middle/High School. This plan was selected as the best long-term comprehensive solution of several options considered. It provides updated space for modern curriculum and returns the building to like-new condition.

Estimated Mill Rate Impact*

	Project Cost	Estimated Tax Impact (per \$1,000 of equalized property value)
QUESTION 1 Renovate MS/HS	\$33.2 million	\$1.45
QUESTION 2 Improve Adjacent District-Owned Land	\$1.825 million	\$0.15
QUESTIONS 1&2	\$35.025 million	\$1.60

*Mill rate refers to the property tax rate per \$1000 of property value. The impact above is conservative. Current historically low interest rates may further reduce the mill rate impact if approved in April.



REFERENDUM 2021

Please Vote April 6

Attend a Virtual Information Meeting

Please join us for a community information meeting to learn more about the referendum and the proposed facility improvements:

Wednesday, February 24 6:00 pm via Zoom	Tuesday, March 9 6:00 pm via Zoom	Thursday, April 1 6:00 pm via Zoom
---	---	--

Visit our website to access zoom meeting links.

Please Vote:

All eligible school district voters can vote on this issue on Tuesday, April 6. Unable to get to the polls? Visit: myvote.wi.gov

Learn More:

www.peshtigo.k12.wi.us

THE BULLDOG BARK

February 2021




REFERENDUM 2021:

Please Vote April 6

The proposed Peshtigo Middle/High School renovation plan honors the legacy of the school by preserving the historical elements of the building while adding 25,000 square feet, renovating the existing building to "like-new" condition, and enhancing safety for a long-term solution. If approved, the referendum will:

- Provide educational opportunities for ALL students;
- Improve day-to-day operational effectiveness;
- Maintain fiscal responsibility.

What do the Referendum Questions Seek?

The first question asks District voters to approve \$33.2 million to expand and fully remodel the existing Peshtigo Middle/High School Building, which serves students in 7th through 12th grade.

The second question asks voters for \$1.825 million to develop the property west of Peshtigo Elementary School to support the District's physical education, athletic, and extracurricular needs as well as provide green space for community use.

All eligible school district voters are asked to cast an informed vote on Tuesday, April 6 at their regular polling place.

Read more inside!



Conceptual Rendering of Renovated Peshtigo Middle/High School

REFERENDUM 2021: Two Capital Referendum Questions

Please Vote April 6, 2021

Educational Opportunities for Students

The addition and renovation plan supports the educational programming needs for today's learners and includes:

- Technical education expansion for manufacturing and construction trades;
- General education classroom additions;
- Physical education and athletic additions including two-station gymnasium; gym seating; weight/fitness room; and girls' locker room expansion;
- Acoustic, sound, and lighting improvements to create assembly space for choir and band concerts and other large group events;
- A student commons that honors the historical elements of the building while creating appropriate spaces for large and small group learning opportunities.

Improve Day-to-Day Operations

Educational programming, enrollment trends, traffic and parking were some of the many considerations as the renovation and addition plan was developed. The proposal is to return the building to like-new condition and includes improvements such as:

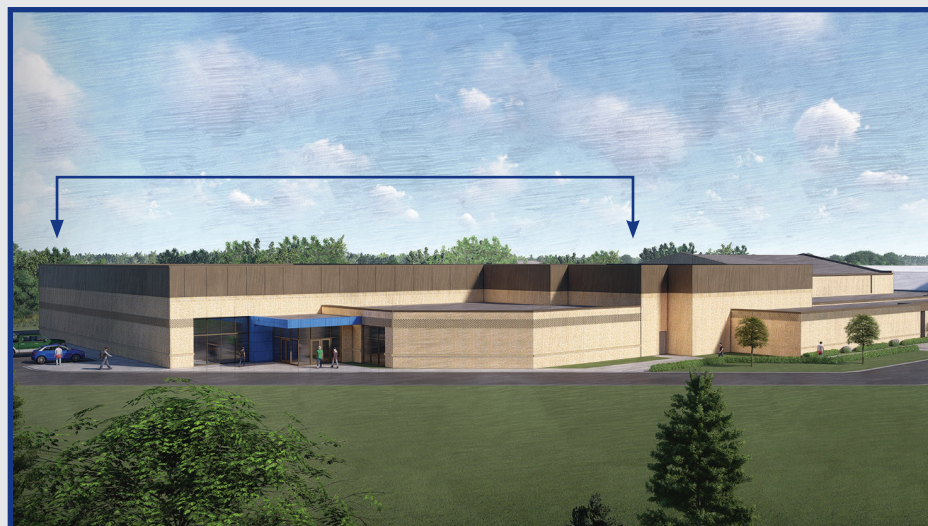
- Building entrance security and safety upgrades;
- Complete HVAC and electrical infrastructure renovations, including adding air conditioning to the entire facility;
- Complete wall, floor, and ceiling finish renovations;
- Address ADA compliance, fire suppression, and egress issues.

Maintain Fiscal Responsibility

The addition and renovation plan was carefully compared to building a new middle/high school. Both solutions met the educational needs of the District. This plan was selected due to the following:

- A new building is estimated at over \$42 million. The renovation and addition plan costs \$33.2 million.
- The cost to build new would have exceeded the District's borrowing capacity, causing the District to use funds reserved for ongoing maintenance and capital improvements.
- The renovation and addition plan meets the District's educational needs, fits within the District's borrowing limit, and maintains reserves for other necessary maintenance at the PELC and District campus.

West Aerial View of Gym & Fitness Room Addition



Question #1: Addition, Building Repairs, and Renovations at MS/HS

The addition will provide general education classrooms; expanded technical education facilities for manufacturing and construction trades; a two-station, multipurpose gym (gymnasium) with acoustic improvements to support performances; a weight/fitness room; and a girls' locker room expansion.

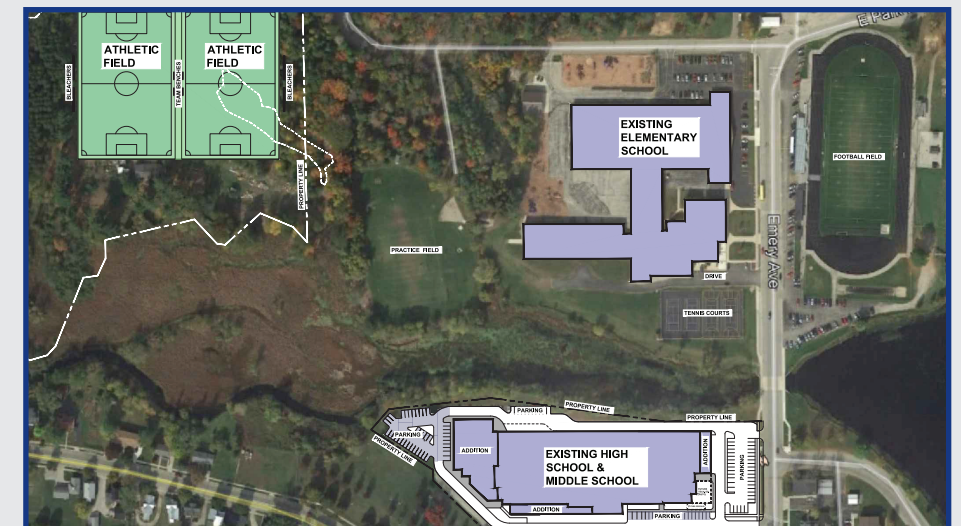
Multipurpose Gymnasium Set For a Performance



Question #1: Addition, Building Repairs, and Renovations at MS/HS

The addition of a two-station, multipurpose gymnasium (*gymnasium*) will have acoustic, sound, and lighting improvements to create assembly space for choir and band concerts and other large group events.

Campus Site Plan



Question #2: Develop Adjacent, District-Owned Land

If approved, the second question on the ballot would allow the land west of Peshtigo Elementary School to be developed for District's physical education, athletic and extracurricular needs, and green space for community use.